

Relevant Information for Council

FILE: X082505.008 **DATE:** 8 March 2024

TO: Lord Mayor and Councillors

FROM: Kim Woodbury, Chief Operating Officer

THROUGH: Monica Barone PSM, Chief Executive Officer

SUBJECT: Information Relevant To Item 7.4 - Revised Project Scope – Sydney Park Brick Kilns Precinct Renewal

For Noting

This memo is for the information of the Lord Mayor and Councillors.

Purpose

At the meeting of the Corporate, Finance, Properties and Tenders Committee on 4 March 2024, further information was sought on the provision of public toilets in Sydney Park.

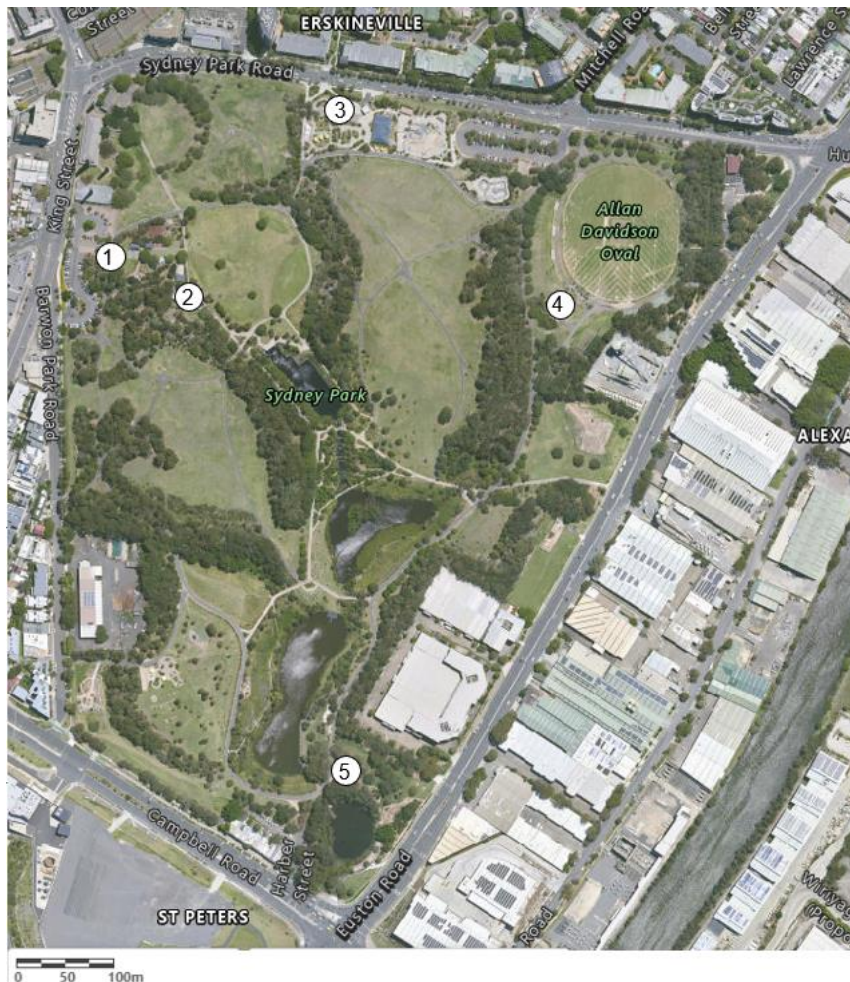
Background

The City's [Public Toilet Strategy](#) recommends that public toilets be provided within 400 metres (five to 10-minute walk) of any point within central Sydney and at all village centres and major neighbourhood parks.

Sydney Park is well serviced by public toilet facilities. There are currently four facilities open to the public and one under construction. Public toilet facilities are available at:

1. **Princess Highway Carpark** (approximately 100 metre, two-to-three-minute walk)
1 x Accessible Unisex toilet and 2 x Unisex toilets available. Open daylight hours (toilets may be closed earlier than sunset in some circumstances). Car park off Barwon Park Road has designated accessible parking bays near the toilets.

2. **Sydney Park Playground** (approximately 170 metre, four-to-five-minute walk)
 2 x Accessible Unisex toilets available. Open daylight hours (open seven days per week from dawn until dusk). Clear accessible path of travel from Barwon Road Carpark to facility and from facility to park paths. Accessible parking bays are available in the car park off Barwon Park Road.
3. **Sydney Park Cycling Centre** (approximately 230 metre, six-to-seven-minute walk)
 1 x Accessible and 2 x Unisex toilets available. Open daylight hours.
4. **Alan Davidson Oval Pavilion** (approximately 500 metre, 10 to 12-minute walk)
 1 x Accessible Unisex toilet, 1 x male toilet and 1 x female toilet available. Open daylight hours. Toilets located within the pavilion are available to the public generally during daylight hours. The toilets are located on the east side of the pavilion (opposite cricket nets). Designated accessible parking bays are located at rear of Oval Pavilion. Designated accessible parking bays for public located in car park off Sydney Park Road
5. **Southwing Pond** (Opening March 2024) - (approximately 700 metre, 10 to 18-minute walk)
 1 x Accessible Unisex toilet, 2 x Unisex toilets available. Open daylight hours. To be added to the National Public Toilet map on opening.



All public toilets in Sydney Park are identified on The National Public Toilet Map webpage (refer <https://toiletmap.gov.au/8914>) and wayfinding signage will be installed as part of the Brick Kilns Precinct renewal. This signage will provide direction to all existing toilets in the park.

Staff will continue to monitor demand in Sydney Park, and if required consider the provision of another facility.

Memo from Kim Woodbury, Chief Operating Officer

Prepared by: Maren Parry, Development Manager

Samantha Carroll, Delivery Manager

Approved

P. M. Barone

MONICA BARONE PSM

Chief Executive Officer